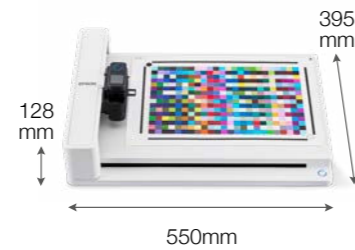


## SPECIFICATIONS

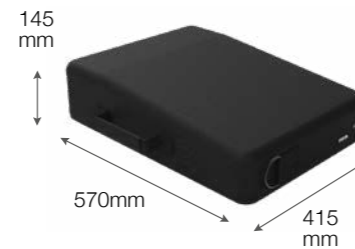
<b>Model Number</b>	<b>Auto Colour Chart Reading Portable Table</b>
<b>Colour Path Size</b>	14 mm x 14 mm (0.55" x 0.55")
<b>Supported Media Size</b>	329 x 483 mm (A3+ / 13" x 19")
<b>Media Thickness</b>	0 – 13 mm
<b>Connectivity</b>	
Interfaces	Hi-Speed USB Type-B Connector (PC to Auto Colour Chart Reading Portable Table)
<b>Dimensions &amp; Weight</b>	
<b>Main Unit</b>	
Dimensions (L x W x H)	395 x 550 x 128 mm
Weight	3.4 kg
<b>Carrying Case</b>	
Dimensions (L x W x H)	415 x 570 x 145 mm
Weight	1.7 kg
<b>Environment Conditions</b>	
Temperature (°C)	Operating: 10 °C – 35 °C Storage: -20 °C – 40 °C
Humidity	5 – 85% (No Condensation)
<b>Electrical Specifications</b>	
Rated Voltage	AC 100 – 240V
Rated Frequency	50 – 60 Hz
Power Consumption	0.6 A – 0.4 A
<b>Operating System</b>	
Supported OS	Windows 8.1 (64 bit), Windows 10 (64 bit), Windows 11 (64 bit)
<b>Polution Index</b>	PD2
<b>Water Proof Index</b>	IPX0
<b>Maximum Elevation</b>	Below 2,000m
<b>Certifications</b>	Respective country's WEEE / RoHS

### Dimensions & Weight

**Main Unit**  
SKU Code: B42B900331  
Weight: 3.4kg



**Carrying Case**  
(Included with Main Unit)  
Weight: 1.7kg



### What's in the box:

- Carrying Case
- Shoulder Strap
- Setup Guide
- Power Cable
- USB I/F Cable
- CD-ROM (OSS License)
- Masking Tape

©2024 Epson Singapore Pte Ltd. All Rights Reserved.  
Reproduction in part or in whole, without the written permission from Epson, is strictly prohibited.

EPSON is a registered trademark of Seiko Epson Corporation.

All other product and company names used herein are for identification purposes only and are the trademarks or registered trademarks of their respective owners.

Epson disclaims any and all rights in those marks. Projected images shown herein are simulations. The actual product design and contents may vary. Specifications are subject to change without notice and may vary between countries. Please check with local Epson offices for more information.

Dealer's Stamp

Information correct at time of printing.  
Printed February 2024

## SPECIFICATIONS

<b>Model Number</b>	<b>SD-10</b>
<b>Colour Measurement</b>	
Technology	Spectroscopic Device
Spectral Range	400 – 700nm
Sampling Interval	Colour Measurement
Photometric Range	10nm (Interpolation by software)
Measurement Frequency	13 times measurement per second (Scanning Mode)
Measurement Geometry	45° Circumferential / Normal Geometry (45° c : 0°)
Measurement Aperture	Φ 7.6mm
Light Source	LED (Including UV)
Measurement Conditions	<ul style="list-style-type: none"> <li>• M0: Including UV light component, ISO 13655:2017 measurement condition M0</li> <li>• M1e: D50 - Including UV light component, measurement conditions equivalent to ISO 13655:2017 measurement condition M1 (Measurement conditions held with a radiant power at all wavelengths from 400 to 700 nm, and power ratios in the 300 to 400 nm and 400 to 500 nm regions similar to D50)</li> <li>• M2: Without UV, ISO 13655:2017 measurement condition M2</li> </ul>
Illuminants	D50 / D65 / A / F1 / F2 / F3 / F7 / F8 / F9 / F10 / F11 / F12
Observers	2° / 10°
ΔE Methods	ΔE 2000 / ΔE 1994 (Graphic Arts) / ΔE1994 (Textiles) / ΔE 1976
Calibration	White reference built in the sensor cover
Scan Length	400mm
Inter-Instrument Agreement	0.4 or less ΔE00 average 1.0 or less ΔE00 maximum
	<ul style="list-style-type: none"> <li>• Deviation from SD-10 manufacturing standard for 12 BCRA colour tiles (D50, 2°)</li> <li>• Ambient temperature 23°C (73.4°F), humidity 50%</li> </ul>
Short Term Repeatability	0.1 ΔE94 White
	<ul style="list-style-type: none"> <li>• Average of 10 measurements every 3 seconds on white tile (D50, 2°)</li> <li>• Ambient temperature 23°C (73.4°F), humidity 50%</li> </ul>
Colour difference from BCRA tile	Calibration value 1.0 or less Δ E00 average
	<ul style="list-style-type: none"> <li>• Deviation from the colour measurement value for 12 BCRA colour tiles (D50, 2°) by a measuring instrument traceable to the national metrological standard</li> <li>• Ambient temperature 23°C (73.4°F), humidity 50%</li> </ul>
<b>Language</b>	
Supported Language	English / French / German / Dutch / Italian / Spanish / Portuguese / Turkish / Russian / Simplified Chinese / Traditional Chinese / Korean / Japanese
<b>Connectivity</b>	
Interfaces	<ul style="list-style-type: none"> <li>• USB Type-C</li> <li>• USB 2.0 Full-Speed</li> <li>• BLE Bluetooth Low Energy</li> </ul>
Memory	Number of saved data at Stand-alone (Spot Mode): 100 Colours
<b>Environment Conditions</b>	
Temperature (°C)	Operating: 0 °C – 40 °C (Spot Mode) / 0 °C – 35 °C (Scan Mode) Storage: -20 °C – 60 °C
Humidity	Operating: 5 – 85% (No Condensation) Storage: 5 – 85% (No Condensation)
<b>Electrical Specifications</b>	
Rated Voltage	AC 220 – 240V
Power Consumption	Operating: 5V
<b>Battery Specifications</b>	
Battery Type	Lithium ion battery
Battery Capacity	1,860mAh
<b>Compatible Epson Software</b>	Epson Edge Print Pro / Epson Spectrometer App

### Dimensions & Weight

**SD-10**  
SKU Code: B41CK17402  
Weight: 190g



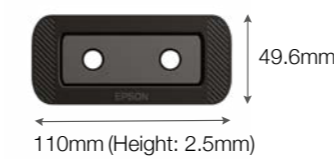
### Main Unit Cover (Optional)

Material: Silicon  
SKU Code: B42B900101



### Alignment Guide (Optional)

Material: Black Part (ABS) / Transparent Part (PET)  
SKU Code: B42B900201



### What's in the box:

- Setup Guide\*
- Storage Case
- Strap
- USB Type A to C Cable
- Certificate of Calibration

\* PDF user guide is provided on the web/CD-ROM of Open-Source software license document.

©2024 Epson Singapore Pte Ltd. All Rights Reserved.  
Reproduction in part or in whole, without the written permission from Epson, is strictly prohibited.

EPSON is a registered trademark of Seiko Epson Corporation.

All other product and company names used herein are for identification purposes only and are the trademarks or registered trademarks of their respective owners.

Epson disclaims any and all rights in those marks. Projected images shown herein are simulations. The actual product design and contents may vary. Specifications are subject to change without notice and may vary between countries. Please check with local Epson offices for more information.

Dealer's Stamp

Information correct at time of printing.  
Printed February 2024

## SD-10 SPECTROPHOTOMETER AND AUTO COLOUR CHART READING PORTABLE TABLE

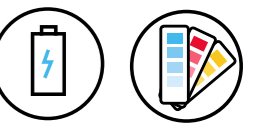
# EPSON

# PORTABLE TOOLS FOR PRECISE COLOUR MEASUREMENT ON-THE-GO.



### Embrace the digital frontier of colour management effortlessly with Epson's SD-10 Spectrophotometer and Auto Colour Chart Reading Portable Table.

The Epson SD-10 colour spectrophotometer revolutionises printing workflow by speeding up colour matching and simplifying colour management process. Compatible with the Auto Colour Chart Reading Portable Table, improve your workflow and save time while ensuring colour consistency throughout your printer fleet. Say goodbye to tedious, time-consuming process of analogue colour matching and embrace the ease of measuring, and reproducing colours with the SD-10 and Auto Colour Chart Reading Portable Table.



Battery Operated\* Colour Management

(\*Rechargeable battery for SD-10 only.)

## ENGINEERED FOR good

### Portable & Convenient

Weighing just 190g, the SD-10 is lightweight and can be easily carried along with the Auto Colour Chart Reading Portable Table anywhere you go.

### Colour Consistency

Connect your smart devices to the Auto Colour Chart Reading Portable Table via a USB Type-C connector for seamless colour consistency in all your prints.

### User-Friendly Usage

Easily operate the SD-10 on the go as a standalone device, thanks to its intuitive LCD and built-in battery, ensuring operation independence without the need for a PC.

Epson Edge Color Lite



Combining precision with portability, the SD-10 spectrophotometer performs accurate colour matching with exceptional reliability. Seamlessly compatible with the Auto Colour Chart Reading Table, the SD-10 elevates colour consistency across printer fleets. Rely on the SD-10 to fulfill your requirements for precise and user-friendly colour management.

## SUPERIOR USABILITY

### Lightweight & Portable

The SD-10 weighs only 190g and is highly portable with its own carrying case and wrist strap.

### Main Unit Cover (Optional)

The silicon cover provides minimises scratches, reduces damage from accidental drops and provides additional grip when handling the device. Safeguard your device from dust, scratches, and spills while preserving its pristine appearance.



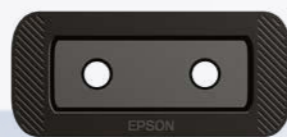
SD10 with functional LCD Display

### Network-free & PC-less Operation

Operate the SD-10 as a stand-alone unit without needing a PC or connecting to the network. The spectrophotometer is equipped with a LCD display and built-in battery for lasting operation and is easily chargeable via USB Type-C cable.

### Alignment Guide (Optional)

Perform colour scans precisely with the optional Alignment Guide, on an exact spot or across a larger target area.



SD-10 Alignment Guide



Unit shield

## SEAMLESS CONNECTION

Pair the SD-10 with the Auto Colour Chart Reading Portable Table using the attached USB Type-C.\*



via USB Type-C\*

\*SD-10 can connect to PC via USB-C cable.



## ACCURATE COLOUR CALIBRATION & VERIFICATION

Colour calibration and verification can be done easily to ensure colour consistency throughout your fleet of Epson printers.

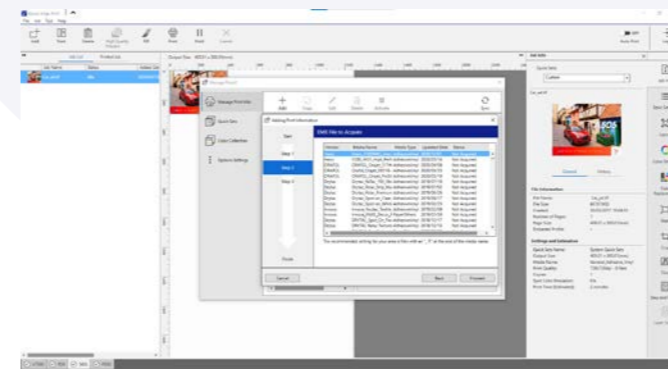
Epson Edge Color Lite



## CREATION OF ICC PROFILE

Easily create optimised ICC profiles using the Epson Edge Color Lite to get accurate and consistent colours throughout your Epson large format printer\* fleet.

\*Printers must be of the same model to maintain colour accuracy.



Create ICC profiles optimised for each media type using Epson Edge Print.

## PRECISE COLOUR MANAGEMENT WITH AUTO COLOUR CHART READING TABLE

The Auto Colour Chart Reading Portable Table, in collaboration with the SD-10, accurately manages colours for Epson's Large Format printers. This is achieved through creating ICC profiles\* for various printing modes and media types, ensuring consistent colours across your printer fleet.

\*Works with Epson Edge Print only.



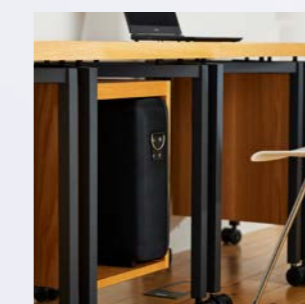
Compatible with:

Epson Edge Color Lite



## GREAT PORTABILITY

Conveniently bring the Auto Colour Chart Reading Portable Table to different site locations in its carrying case. During storage, the table can be easily stored without obstructing your workspace.



Compact storage.

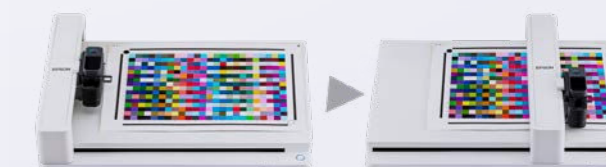


Portable and hassle-free.

## FUSS-FREE OPERATION

With the automatic media thickness and position function, it takes less than 5 minutes\* to scan a 379 colour patch for colour calibration. This significantly improves production workflow and saves time for colour management.

\*Based on internal testing.



## IMPROVED COLOUR MATCHING WORKFLOW

### Manual colour matching workflow by traditional colour swatches

Typically repeated **4 to 5** times on average



- STEP 1** Receive the printing data from client.
- STEP 2** Print the data to media customer requested by printer.
- STEP 3** Compare the printed colour with colour chart by visual judgement.
- STEP 4** Input of colour values to softwares.
- STEP 5** Print the adjusted data and confirming accuracy visually.
- STEP 6** Complete the colour matching.

VS

### Digital colour matching workflow by SD-10

Typically repeated **1 to 2** times on average



- STEP 1** Receive the printing data from client.
- STEP 2** Measure the targeted colour using SD-10.
- STEP 3** Alternatively, perform spot colour matching method using the Epson Edge Print Pro.
- STEP 4** Print the adjusted image.
- STEP 5** Check for accuracy again using SD-10 and complete the workflow.
- STEP 6** If necessary, compare using the colour charts for higher accuracy.

Eliminate time-consuming process of colour matching in an analogue workflow by going digital with SD-10. Instead of going through multiple visual checking and data adjusting, let Epson's spectrophotometer do the spot colour matching, helping your business save valuable time and costly manpower.

\*Only solid colour areas can be replaced using the function of spot colour matching in Epson Edge Print Pro.

## READY-TO-USE CONVENIENCE

The Auto Colour Chart Reading Portable Table is ready for immediate use upon unpacking from its carrying case, complete with the necessary cables and setup guide. This allows operators to start their work promptly at the onsite location.



\*Refer to the specification sheet for bundled items. SD-10 is sold separately.